



Land along Old London Road, Maldon

Lightsource bp is working on a proposal for a solar farm at Land along Old London Road, Maldon. We will fund and operate a solar farm connected into the local electricity network, with an output power capacity of 49.9MW (Megawatts).

We've chosen this site after careful consideration, and we're now undertaking a wide range of environmental assessments to help shape our plans. These include landscape and visual, heritage and archaeology, ecology and ornithology, flooding and more.

A key part of developing plans for the solar farm is engaging with local communities. We previously held a consultation event for the site in 2023 and after a period of reviewing comments, discussions with Maldon District Council, we wanted to provide an update on the latest plans and changes that have been made since we consulted prior to the application being submitted.

STATISTICS



Equivalent to the energy needs of
23,102 households



258
acres of land



13,099
tonnes of carbon emissions saved



Equivalent to taking over
4,156 cars off the road

This project will contribute towards the UK's 2050 targets for reaching net zero.

Community consultation event

Get involved!

Want to talk to us about our proposals? We're holding a consultation event to display our plans and gather feedback. Come and speak to us on...



Thursday 22 January 2026 at:

Woodham Walter Village Hall,
Rectory Road, Woodham Walter, Maldon
CM9 6RE

Drop in any time between 3pm and 8pm

Proposed solar installation at

Land along Old London Road, Maldon

We're still in the early stages, and our plans will evolve based on local input and the results of our ecological, landscape and heritage assessments. These are our current thoughts. For further details, please join us at our community info event on Thursday 22 January. Drop in between 3 pm and 8 pm.

Native Species

We have undertaken an Extended Phase 1 Habitat Survey to inform the layout design and construction mitigation measures. We have also undertaken seasonal Bird surveys, which have been used to inform our design.

Views and Screening

We will submit a detailed planting plan as part of the planning application, which will focus on screening potential views of the solar farm and increasing biodiversity by planting additional trees, shrubs and hedgerows, to provide additional screening between the project site and residential areas.

Continued Agricultural Use

Previously these fields have been used for the cultivation of cereal crops, however they are currently not in use for agriculture. Our proposal includes flexibility for the landowners to maintain agricultural activity should they wish to, whether in the form of biodiversity planting or sheep grazing, so the land under the solar farm can remain in agricultural use.

Flood Risk

No parts of the site are within flood zones. As part of our proposal, we will submit a flood risk assessment and drainage strategy along with our application for planning permission.

Cultural Heritage Impact

We are aware that there are sites of cultural and scientific significance in the area and have commissioned independent surveys to make sure our proposals will fully assess the potential for archaeology within the site.

Access (▶)

Proposed construction and operational access will be from the existing accesses from Old London Road, Tom Tit Lane and Oak Farm Road which already serves HGVs.

Green Open Spaces

Our proposal has been designed to leave wide spaces around the site boundaries and between the row of panels to avoid shading the panels. This will leave the majority of the fenced solar array area as uncovered grassland.

Community Benefits

We are committed to ensuring the local community benefit from hosting a solar farm and will provide a fund of £50,000 to be distributed between Woodham Walter and Woodham Mortimer Parish Councils. We are also looking to provide further funds to support local initiatives, for example environmental restoration of the wider area or provide community facilities. We are seeking your views and suggestions for projects that could be further supported with significant community benefit.

Cable Route

The cable route is planned to run through land immediately to the east for a distance of approximately 900 metres. The point of connection is Maldon Substation, located at the end of Maldon Wycke.

Trees and hedgerows

While developing the layout we have sought to maintain the majority of the existing trees and hedgerows onsite.

Boosting Biodiversity

A bespoke Biodiversity Management Plan will ensure that the existing and new habitats are enhanced or created to benefit local wildlife. As part of this initiative, our landscape planting, seeding and habitat creation plans will focus on native species. We are keen to hear from and work with any local beekeepers and land management organisations to support wildlife and boost the local habitats.

FREQUENTLY ASKED QUESTIONS

What has changed since the previous community consultation?

Some fields to the east of Tom Tit Lane have been removed from the proposed site, and fields to the west of Tom Tit Lane and Oak Farm Road and south of Old London Road have been added. The proposed generation capacity for the solar farm, 49.9MW, remains the same.

Will the solar farm cause traffic disruption?

Once the solar farm is in place it requires very little maintenance and approximately monthly visits in regular cars or 4x4s would cause no traffic disruption. Whilst the solar farm is being constructed, a traffic management plan will be put in place.

Will the solar farm be noisy?

No - you would not expect to hear any noise beyond the site boundary.

What will the impact be on wildlife?

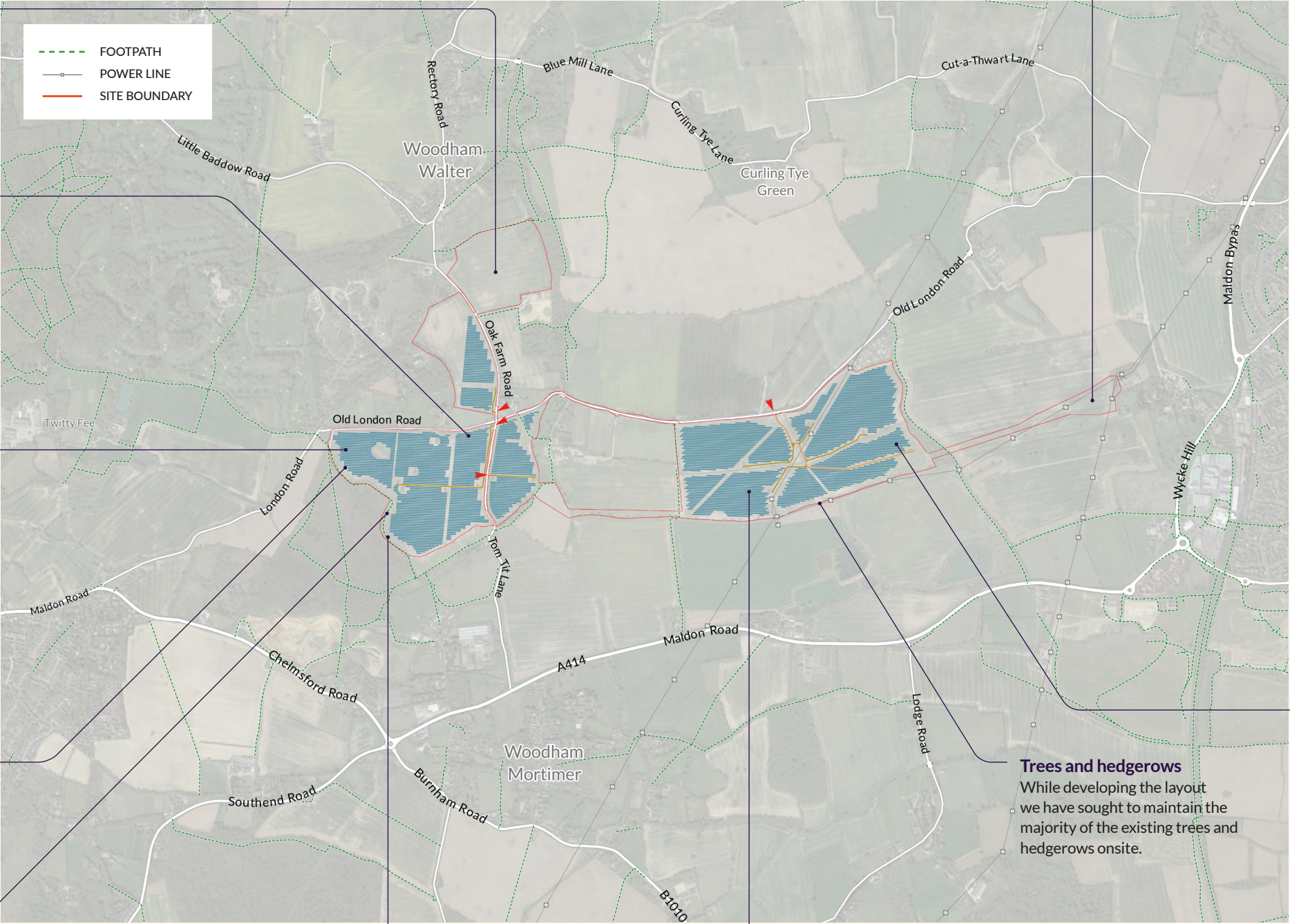
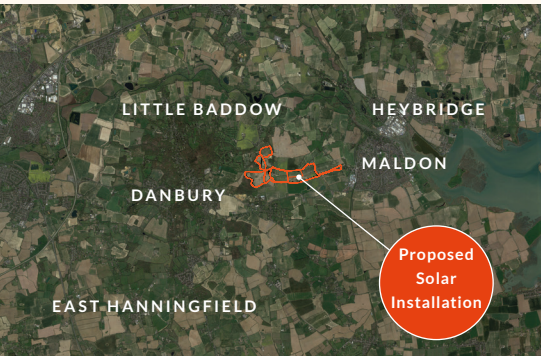
Solar farms have the potential to bring about significant increases in wildlife populations on agricultural land. They are essentially secure sites with little disturbance from humans or machinery once site is operational. Additionally, we often plant new trees and hedgerows, and seed wildflowers and grasses, all of which enhance prospects for local wildlife.

Do solar farms pose a health risk?

No - solar is a passive technology which doesn't produce any harmful by-products.

Agricultural Land Grading

The eastern part of the site is classed as non-Best and Most Versatile (BMV) land. We are in the process of analysing land survey data on the remaining land, and use this data to further inform our proposal.





Community engagement

It's important to us that the local community are fully informed of the plans for the site and have the opportunity to comment and learn about the proposal. We will be holding an information event to provide details about our project ideas at this stage, and we welcome your feedback.

The consultation event will be held on



Thursday 22 January 2026

Woodham Walter Village Hall,
Rectory Road, Woodham Walter, Maldon
CM9 6RE

Drop in any time between 3pm and 8pm

Find out more

If you have queries in relation to this project, please contact the project team:

T | 0333 200 0755

E | info@lightsourcebp.com (quoting "Maldon")

WHO ARE WE?

Lightsource bp is a global market leader in the funding, development and long-term management of large-scale solar projects and smart energy solutions.

We work closely with local businesses and communities to supply clean, dependable and competitively priced energy. We're dedicated to securing a low-carbon future, and to meeting the dual challenge of an increased demand for energy alongside a need to reduce emissions, in the UK and worldwide.

