


lightsource bp

## Native Species

## Views and Screening

## New Vegetation Planting

## Cultural Heritage Impact

 NATIONAL TRAIL  
 POWER LINE  
 SITE BOUNDARY

## Access

## Existing Vegetation

## Flood Risk

A drainage strategy is being developed to ensure that flooding is mitigated on site. We are currently working with the Environment Agency to help evolve the drainage strategy.

## Agricultural Land Grading

The agricultural land comprising the site is mapped under the publicly available National Land Capability for Agriculture (LCA -partial cover) as a mixture of Class 4.2, Class 5.2 and Class 5.3 agricultural land. Based on the publicly available information the entire site consists of non-prime agricultural land.

## Boosting Biodiversity

A bespoke Biodiversity Management Plan will ensure that the existing and new habitats are enhanced or created to benefit local wildlife. As part of this initiative, our landscape planting, seeding and habitat creation plans will focus on native species. We are keen to hear from and work with any local beekeepers and land management organisations to support wildlife and boost the local habitats.

## Cable Route

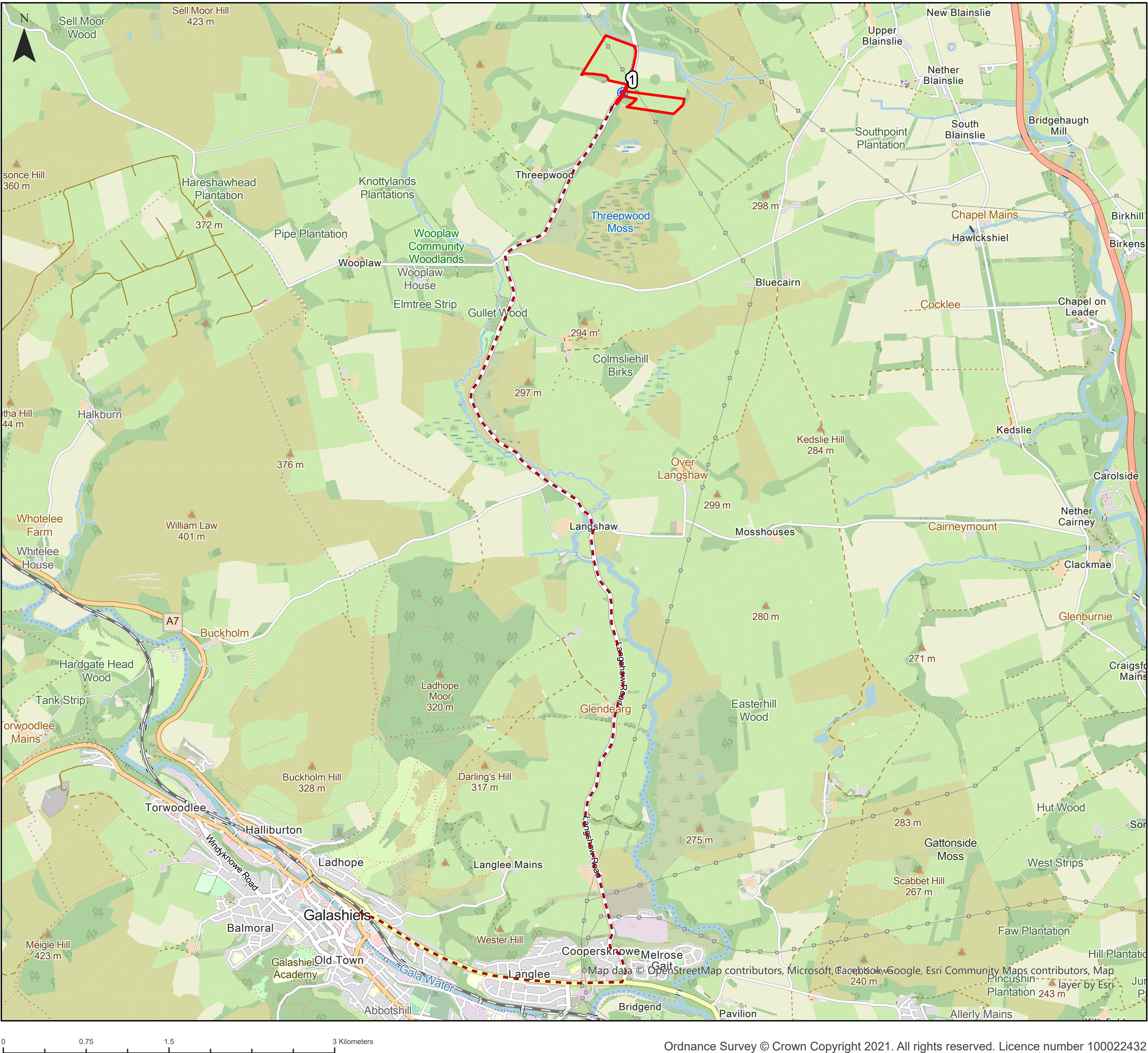
The project will connect via an approximately 0.3km of underground cable into the proposed SP Energy Networks Gala North Substation, located near the site. The underground cable will be installed by SP Energy Networks.



# Proposed Haul Route

The proposed haul route has been identified by considering the ability of the route to physically accommodate the required vehicles, in addition to the sensitivity of the route to potential disruption by the movements of traffic to and from the Application Site.

The haulage route will likely be from the A7 to the south of the Application Site. Delivery vehicles will travel along the A7 in Galashiels and take the B6374 exit at Station Brae Roundabout by Galashiels train station. Vehicles will travel east along the B6374 for approximately 2.5km before taking the first exit at the roundabout onto Easter Langlee. Vehicles will travel north on Easter Langlee for approximately 0.6 km and continue along this road onto Langshaw Road. Vehicles will continue along Langshaw Road for approximately 3.7km before bearing left onto an unnamed road in Langshaw. Vehicles will continue along the unnamed road for approximately 5km before taking a right turn into the site access point.



Sheepfold BESS  
Proposed Haul Route  
Figure 5.1

- Key
- Development Boundary
  - Route Analysis
  - Proposed Haul Route
  - Condition Survey Extent



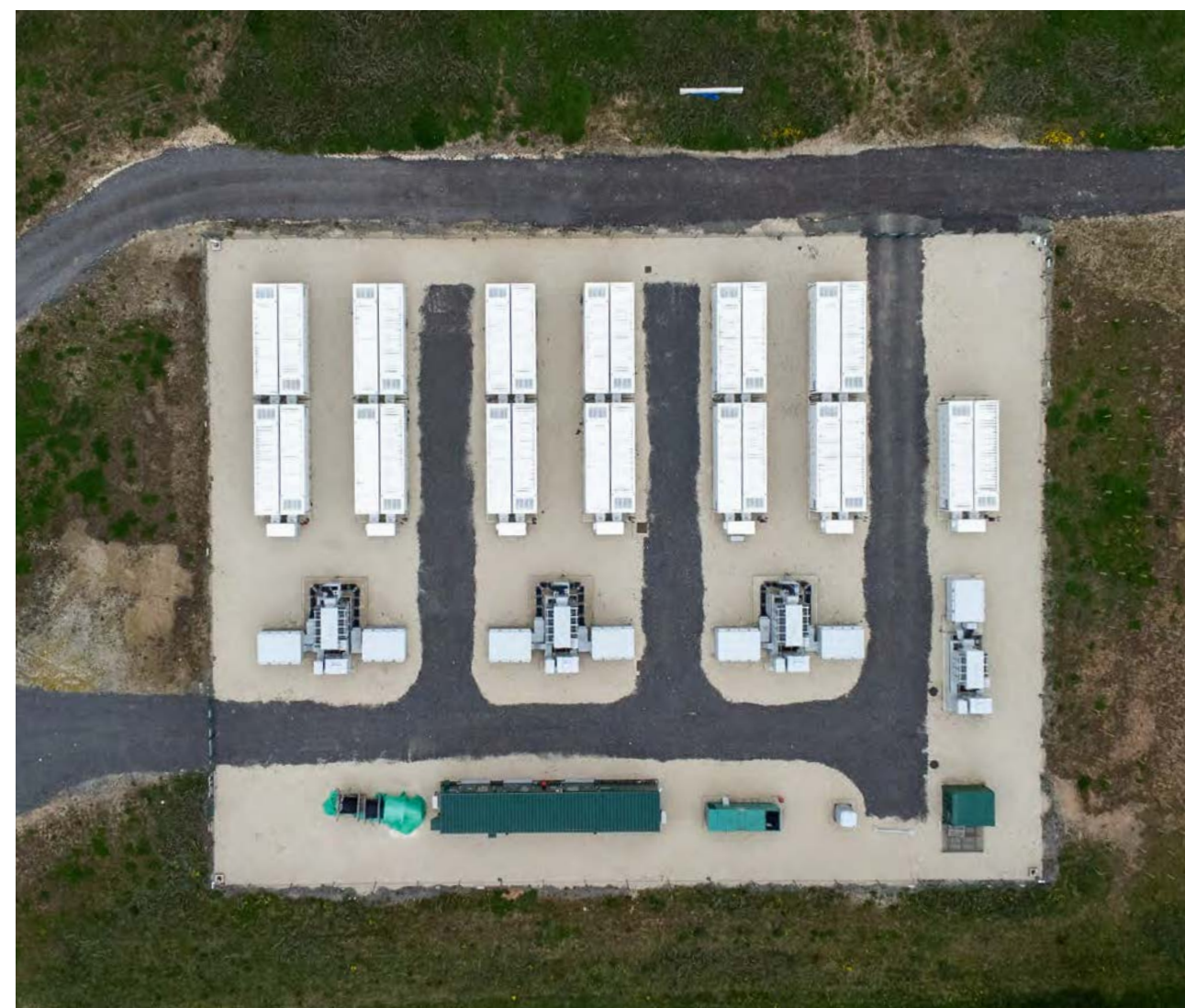
# About the Project

Lightsource bp is working on a proposal for an energy storage project at land south of Lauder and west of Blainslie. We will fund and operate a 150MW/600MWh (4-hour duration) battery connected into the national grid.

The energy storage project will facilitate the integration of renewable energy into the grid, helping to support low-cost electricity and the enhanced reliability of the electricity grid.

We've chosen this site after careful consideration, and we're now undertaking a wide range of environmental assessments to help shape our plans. These include landscape and visual, heritage and archaeology, ecology and ornithology, flooding and more.

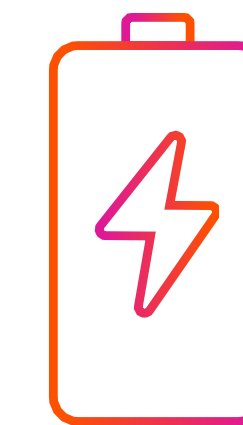
A key part of developing plans for energy storage is community involvement, we want to hear your views. Members of the Lightsource bp team are on hand to answer any questions you may have.



## STATISTICS



**150MW**  
installed capacity



**68**  
battery containers



**49**  
acres of land



**40**  
years operational life

This project will contribute to Scotland's ambitions of reaching net zero emissions by 2045.