

This drawing may contain Ordnance Survey material by permission of Ordnance Survey on behalf of the Controller of Her Majesty's Stationery Office © Crown Copyright 2022. All rights reserved. Reference number 0100031673

OS Open data / © Natural England / © DEFRA / © DECC / © Historic England / © Environment Agency. Contains Ordnance Survey data © Crown copyright and database right 2022 / Aerial Photography - World Imagery - Source: Esri, DigitalGlobe, GeoEye, Earthstar Geographics, CNES/Airbus DS, USDA, USGS, AeroGRID, IGN, and the GIS User Community

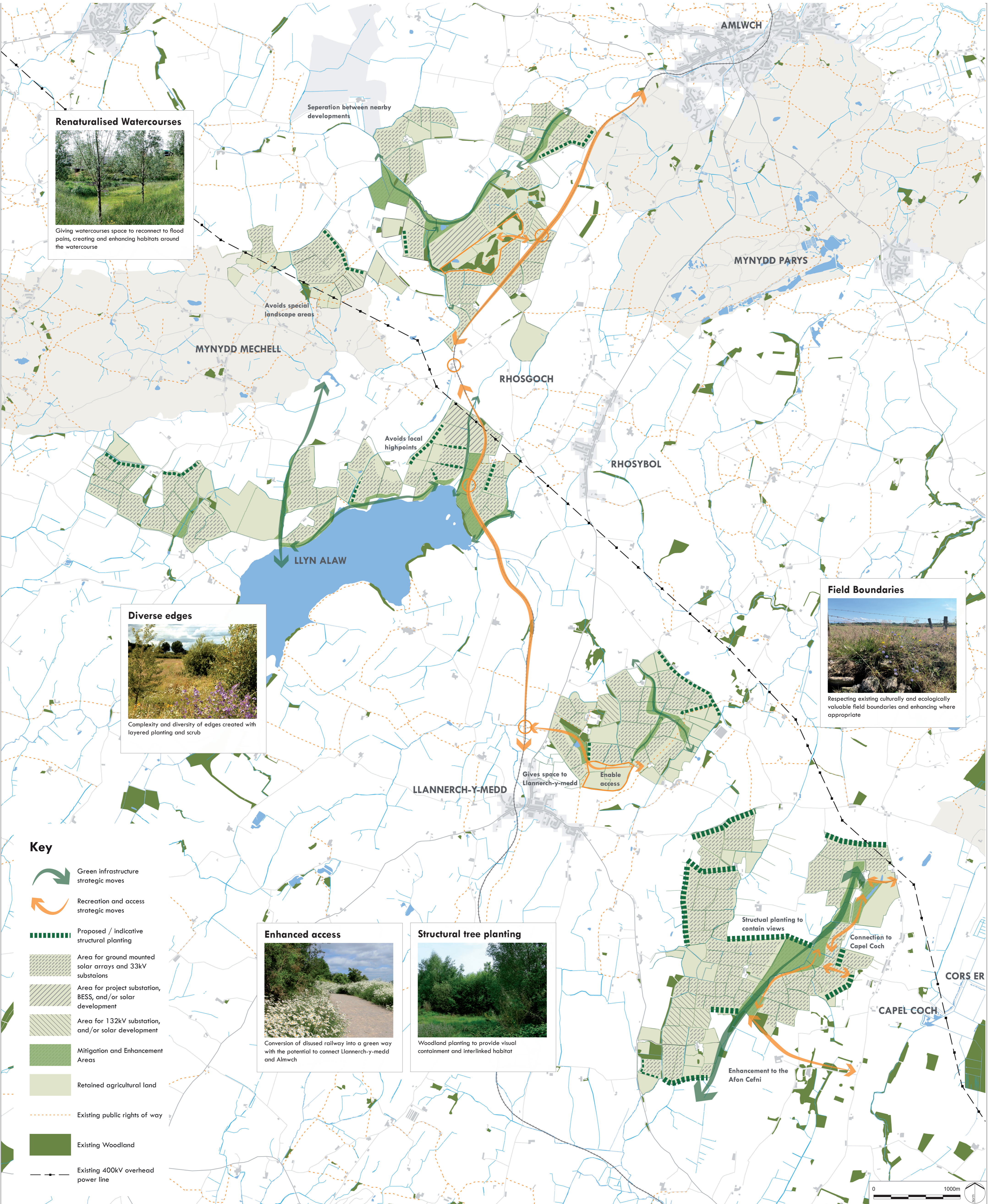
No dimensions are to be scaled from this drawing. All dimensions are to be checked on site. Area measurements for indicative purposes only.

© LDA Design Consulting Ltd. Quality Assured to BS EN ISO 9001 : 2015
Sources: Ordnance Survey

P04	Legend for 132kv and solar updated to remove BESS	18/10/2024
P03	Hatch changed for clarity	03/09/2024
REV.	Updated following legal review	APP. DATE
	DESCRIPTION	

ISSUED BY	Bristol	T: 0117 2033 628
DATE	Aug 2024	DRAWN LT
SCALE@A1	1:20,000	CHECKED KH
STATUS	Draft	APPROVED KH

Z:\8888_Mat_Solar\Graphics\Plans_Images\07_Working_Masterplan_8888_Working_Masterplan_LP1_1.indd



Renaturalised Watercourses



Giving watercourses space to reconnect to flood plains, creating and enhancing habitats around the watercourse

Separation between nearby developments

Avoids special landscape areas

Avoids local highpoints

Diverse edges



Complexity and diversity of edges created with layered planting and scrub

Field Boundaries



Respecting existing culturally and ecologically valuable field boundaries and enhancing where appropriate

Gives space to Llanerch-y-medd

Enable access

Structural planting to contain views

Connection to Capel Coch

Enhancement to the Afon Cefni

Key

- Green infrastructure strategic moves
- Recreation and access strategic moves
- Proposed / indicative structural planting
- Area for ground mounted solar arrays and 33kV substations
- Area for project substation, BESS, and/or solar development
- Area for 132kV substation, and/or solar development
- Mitigation and Enhancement Areas
- Retained agricultural land
- Existing public rights of way
- Existing Woodland
- Existing 400kV overhead power line

Enhanced access



Conversion of disused railway into a green way with the potential to connect Llanerch-y-medd and Amlwch

Structural tree planting



Woodland planting to provide visual containment and interlinked habitat

