

This drawing may contain Ordnance Survey material by permission of Ordnance Survey on behalf of the Controller of Her Majesty's Stationery Office © Crown Copyright 2022. All rights reserved. Reference number 0100031673

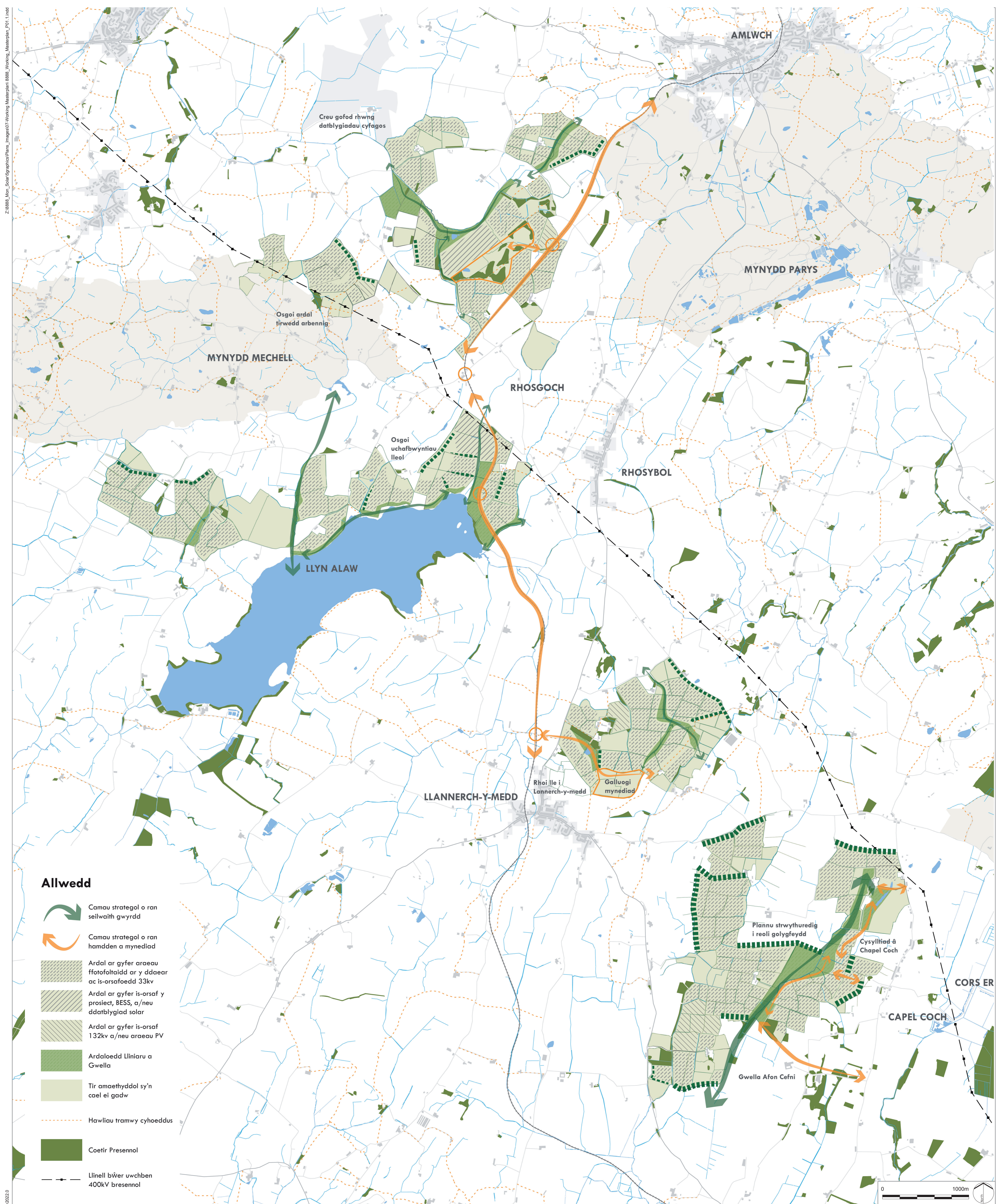
OS Open data / © Natural England / © DEFRA / © DECC / © Historic England / © Environment Agency. Contains Ordnance Survey data © Crown copyright and database right 2022 / Aerial Photography - World Imagery - Source: Esri, DigitalGlobe, GeoEye, Earthstar Geographics, CNES/Airbus DS, USDA, USGS, AeroGRID, IGN, and the GIS User Community

No dimensions are to be scaled from this drawing.
All dimensions are to be checked on site.
Area measurements for indicative purposes only.

© LDA Design Consulting Ltd. Quality Assured to BS EN ISO 9001 : 2015
Sources: Ordnance Survey

P04	Legend for 132kv and solar updated to remove BESS	18/10/2024
	Hatch changed for clarity	
P03	Updated following legal review	03/09/2024
REV.	DESCRIPTION	APP. DATE

ISSUED BY	Bristol	T: 0117 2033 628
DATE	Aug 2024	DRAWN LT
SCALE@A1	1:20,000	CHECKED KH
STATUS	Draft	APPROVED KH



Allwedd

-  Camau strategol o ran seilwaith gwyrdd
-  Camau strategol o ran hamdden a mynediad
-  Ardal ar gyfer araeau ffotofoltaidd ar y ddaear ac is-orsafedd 33kv
-  Ardal ar gyfer is-orsaf y prosiect, BESS, a/neu ddatblygiad solar
-  Ardal ar gyfer is-orsaf 132kv a/neu araeau PV
-  Ardaloeedd Lliniaru a Gwella
-  Tir amaethyddol sy'n cael ei gadw
-  Hawliau tramwy cyhoeddus
-  Coetir Presennol
-  Llinell bŵer uwchben 400kV bresennol

020220

LEGEND