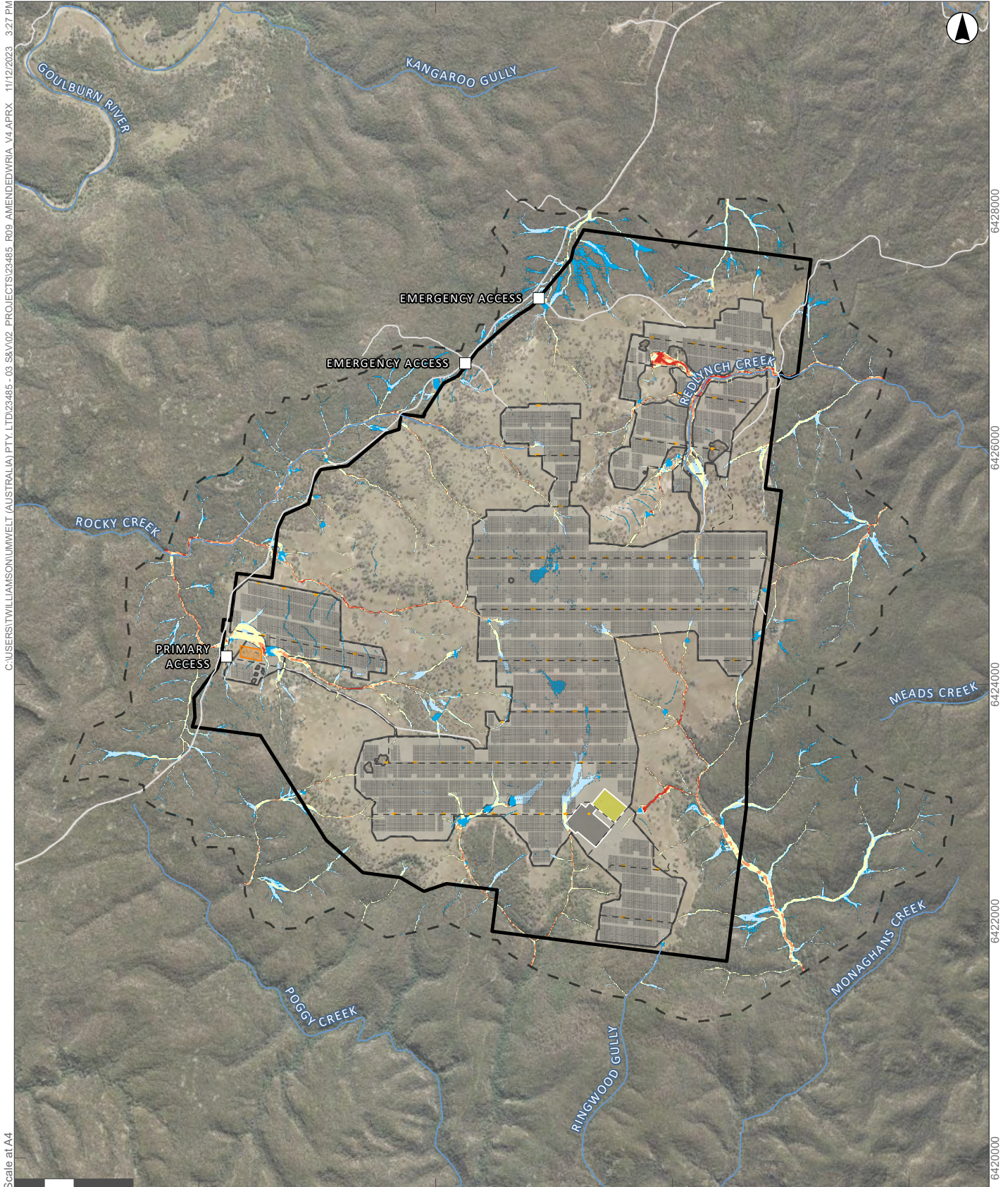


224000 226000 228000 230000



C:\USER\STWILLIAMSON\UMWELT (AUSTRALIA) PTY. LTD\23485 - 03 S&V02 PROJECTS\23485 - R09 AMENDED\WRIA_V4\APRX_11/12/2023_3:27 PM

1:45,000
Scale at A4

GDA 1994 MGA Zone 56

Legend

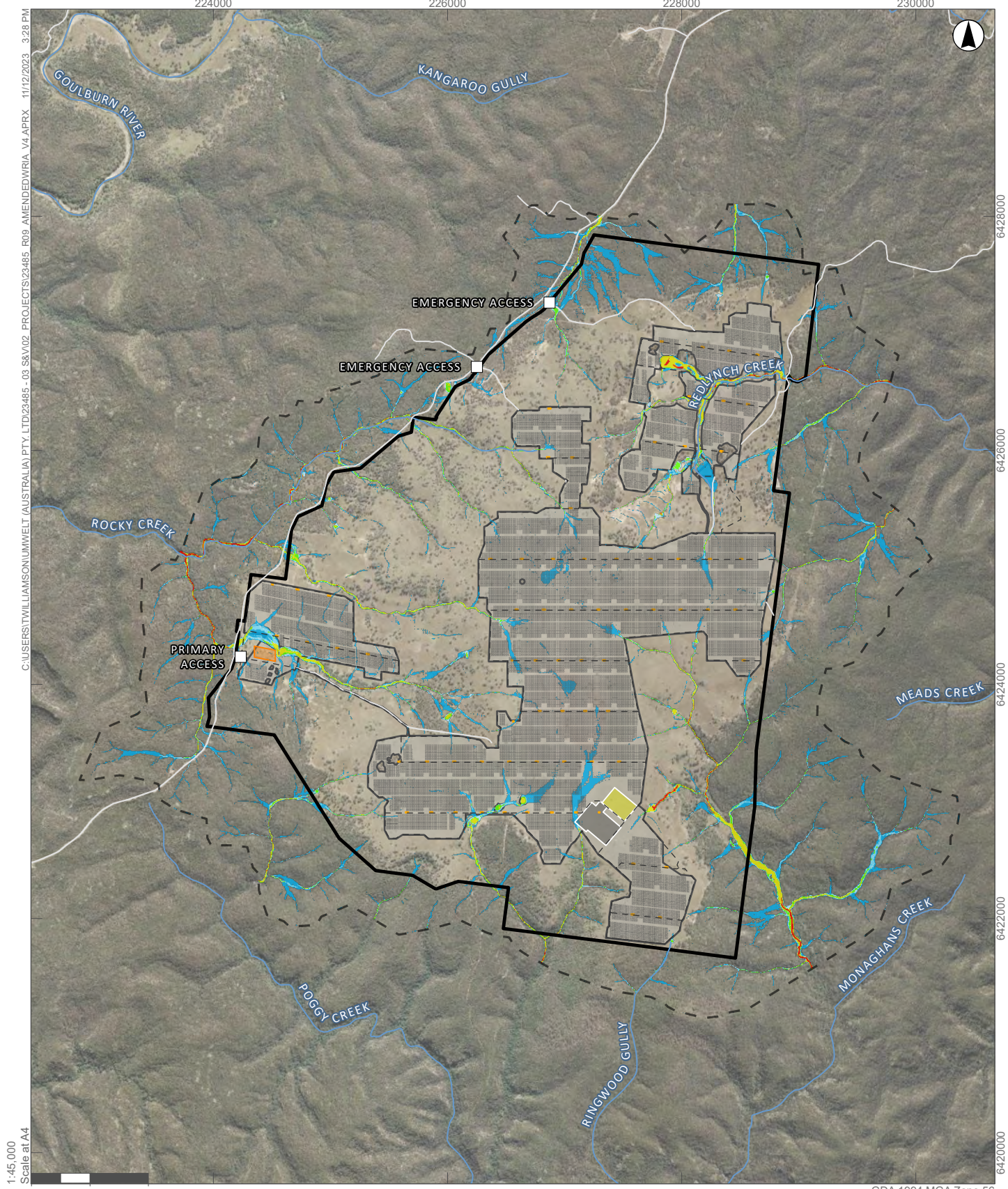
- Access Points
- Proposed Access Tracks
- Roads and Tracks
- Watercourse
- Model Extent
- Project Area
- Development Footprint - Amended Project
- Compound Area

- Proposed Infrastructure**
- Battery Energy Storage System
 - Battery Substation
 - Inverters
 - Solar Panel Footprint

- Water Velocity (m/s)**
- <math>< 0.5</math>
 - 0.5 - 1
 - 1 - 2
 - 2 - 3
 - > 3.0

APPENDIX C.5

1% AEP Flood Velocity for Existing Conditions



1:45,000
Scale at A4

GDA 1994 MGA Zone 56

Legend

- Access Points
- Proposed Access Tracks
- Roads and Tracks
- Watercourse
- Model Extent
- Project Area
- Development Footprint - Amended Project
- Compound Area

- Proposed Infrastructure**
- Battery Energy Storage System
 - Battery Substation
 - Inverters
 - Solar Panel Footprint

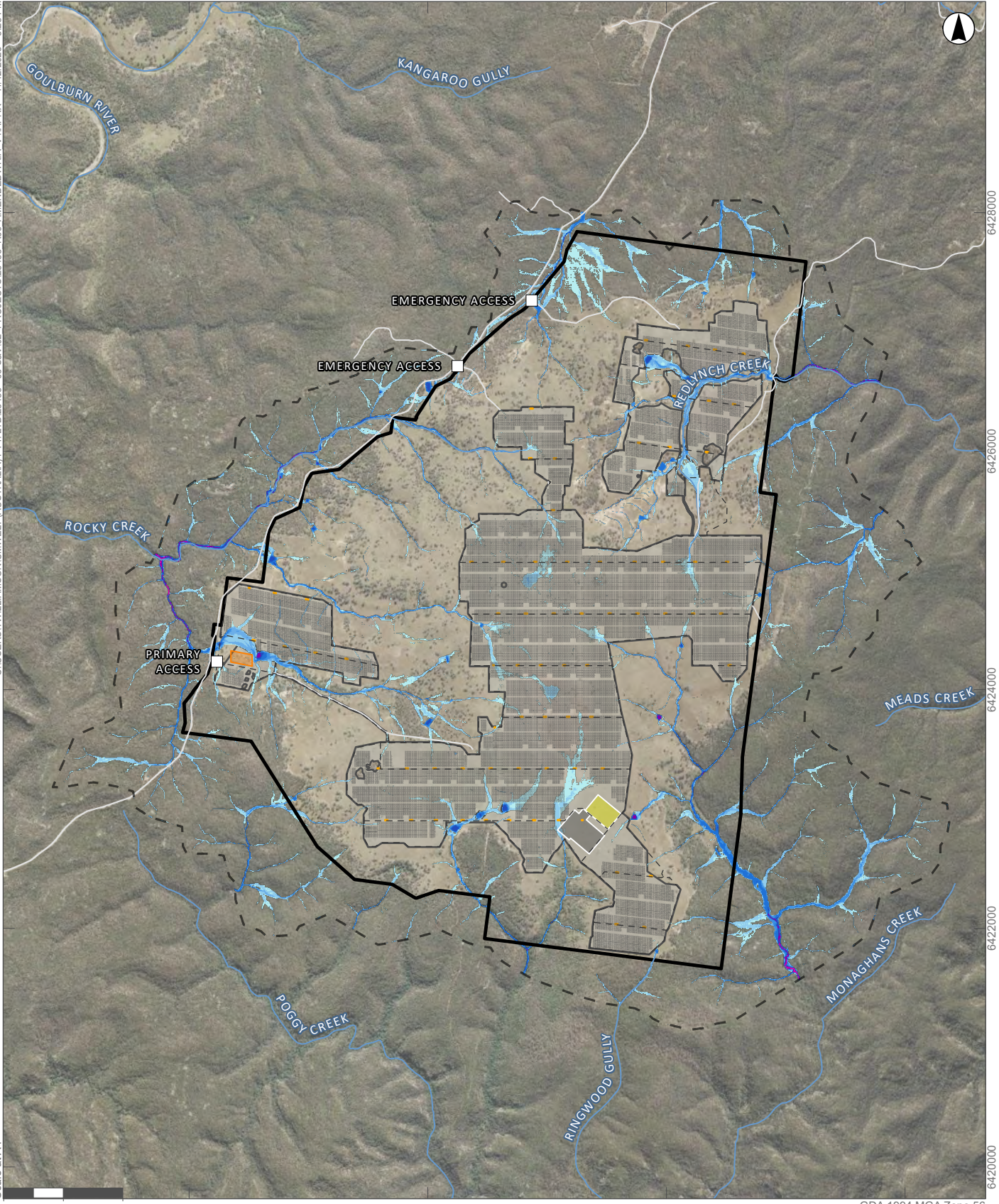
- Hazard Category**
- H1
 - H2
 - H3
 - H4
 - H5
 - H6

APPENDIX C.6

1% AEP Flood Hazard for Existing Conditions

224000 226000 228000 230000

C:\USERSTWILLIAMSON\UMWELT (AUSTRALIA) PTY. LTD\23485 - 03 S&V02 PROJECTS\23485 - R09 AMENDED\WRIA_V4\APRX_11/12/2023_3:28 PM



1:45,000
Scale at A4

GDA 1994 MGA Zone 56

Legend

- Access Points
- Proposed Access Tracks
- Roads and Tracks
- Watercourse
- Model Extent
- Project Area
- Development Footprint - Amended Project
- Compound Area

- Proposed Infrastructure**
- Battery Energy Storage System
 - Battery Substation
 - Inverters
 - Solar Panel Footprint

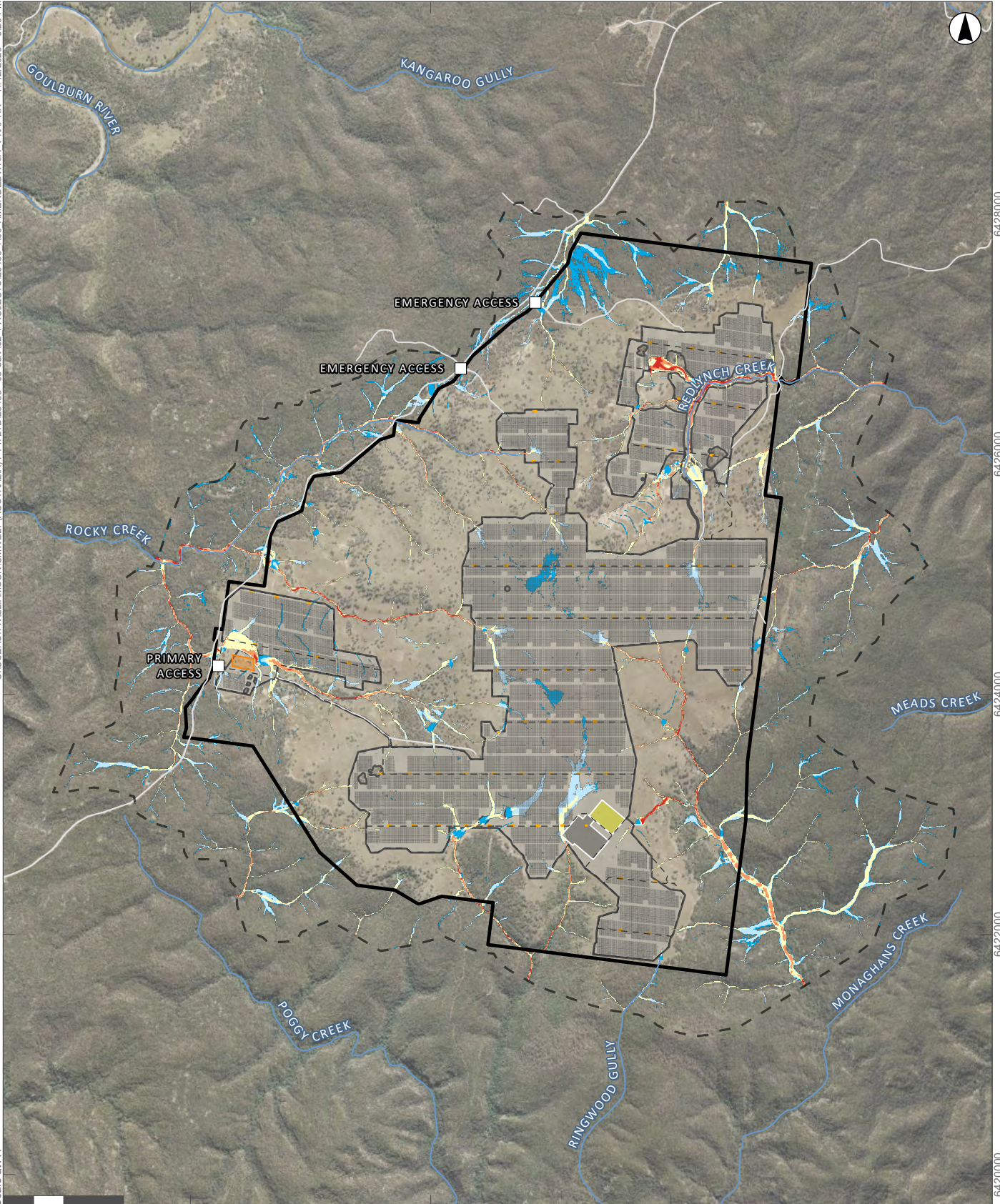
- Water Depth (m)**
- < 0.1
 - 0.1 - 0.3
 - 0.3 - 0.5
 - 0.5 - 1
 - 1 - 2
 - 2 - 3
 - 3 - 4
 - > 4.0

APPENDIX C.7

0.5% AEP Flood Depth for Existing Conditions

224000 226000 228000 230000

C:\USER\STWILLIAMSON\UMWELT (AUSTRALIA) PTY. LTD\23485 - 03 S&V02 PROJECTS\23485 - R09 AMENDED\WRIA_V4\APRX_11/12/2023_3:29 PM



1:45,000
Scale at A4

GDA 1994 MGA Zone 56

Legend

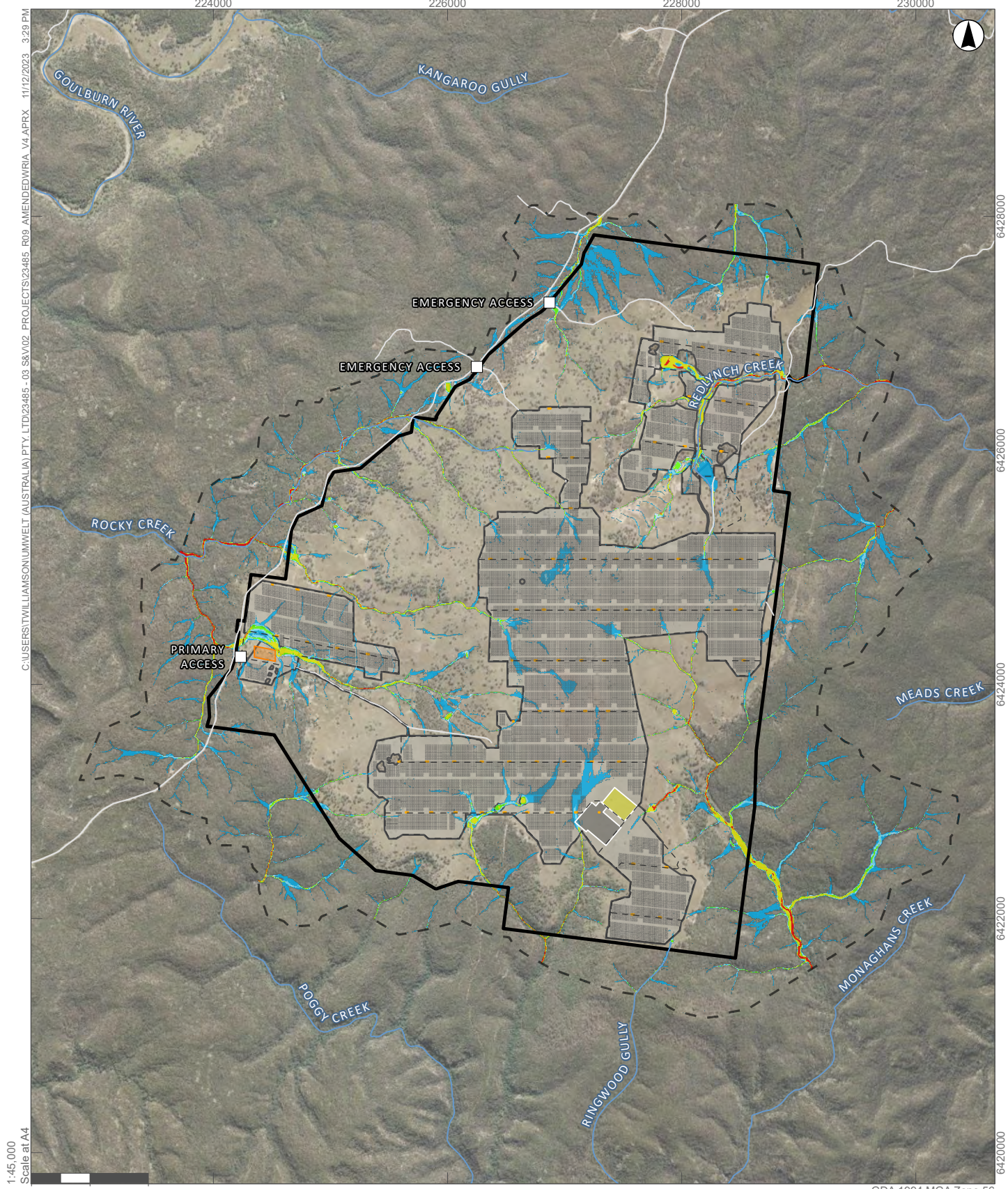
- Access Points
- Proposed Access Tracks
- Roads and Tracks
- Watercourse
- Model Extent
- Project Area
- Development Footprint - Amended Project
- Compound Area

- Proposed Infrastructure**
- Battery Energy Storage System
 - Battery Substation
 - Inverters
 - Solar Panel Footprint

- Water Velocity (m/s)**
- <math>< 0.5</math>
 - 0.5 - 1
 - 1 - 2
 - 2 - 3
 - > 3.0

APPENDIX C.8

0.5% AEP Flood Velocity for Existing Conditions



C:\USER\STWILLIAMSON\UMWELT (AUSTRALIA) PTY. LTD\23485 - 03 S&V02 PROJECTS\23485 - R09 AMENDED\WRIA_V4\APRX_11/12/2023_3:29 PM

1:45,000
Scale at A4

0 500 1,000 Meters

GDA 1994 MGA Zone 56

Legend

- Access Points
- Proposed Access Tracks
- Roads and Tracks
- Watercourse
- Model Extent
- Project Area
- Development Footprint - Amended Project
- Compound Area

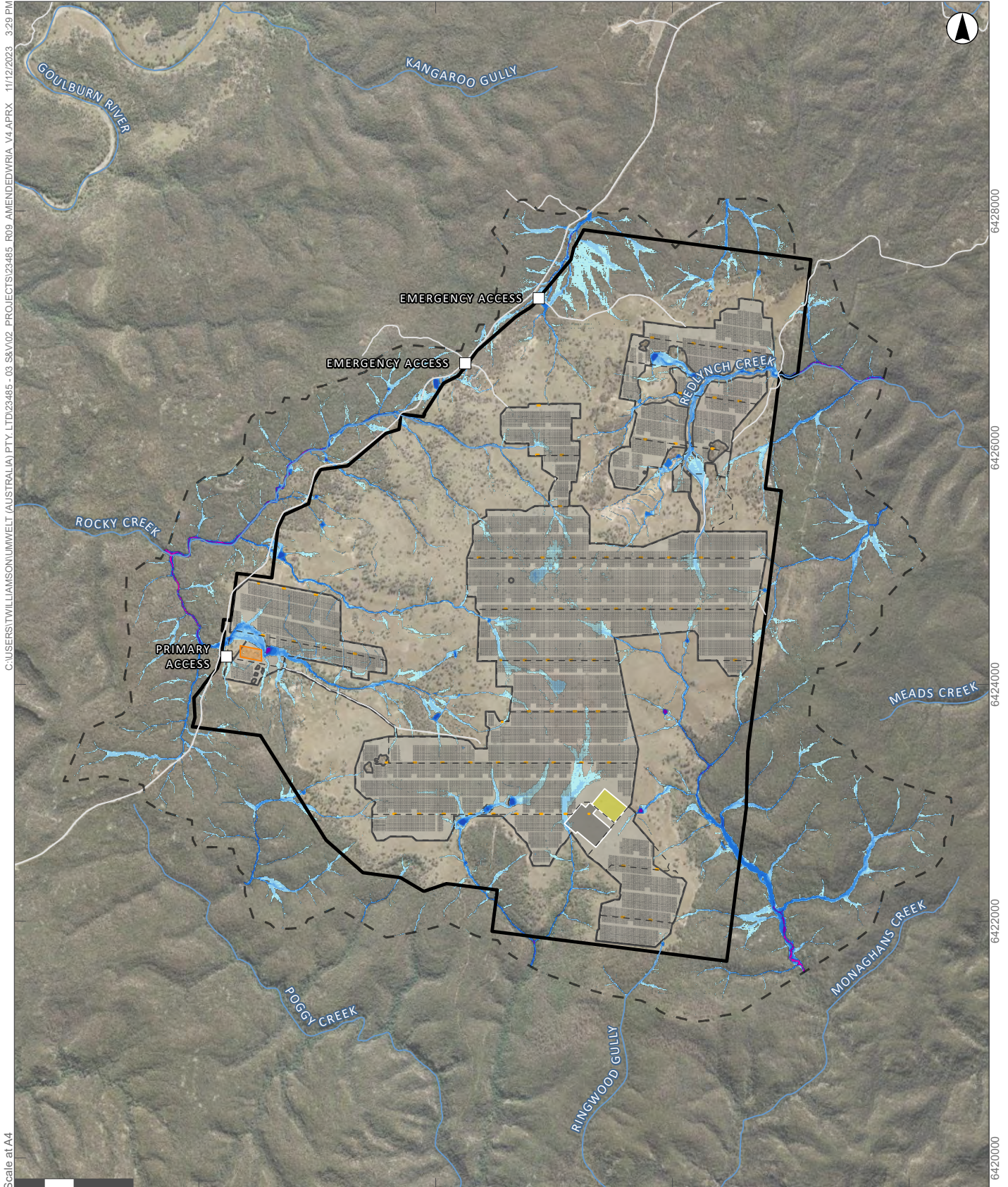
- Proposed Infrastructure**
- Battery Energy Storage System
 - Battery Substation
 - Inverters
 - Solar Panel Footprint

- Hazard Category**
- H1
 - H2
 - H3
 - H4
 - H5
 - H6

APPENDIX C.9

0.5% AEP Flood Hazard for Existing Conditions

224000 226000 228000 230000



C:\USERSTWILLIAMSON\UMWELT (AUSTRALIA) PTY. LTD\23485 - 03 S&V02 PROJECTS\23485 - R09 AMENDED\WRIA_V4\APRX_11/12/2023_3:29 PM

1:45,000
Scale at A4

GDA 1994 MGA Zone 56

Legend

- Access Points
- Proposed Access Tracks
- Roads and Tracks
- Watercourse
- Model Extent
- Project Area
- Development Footprint - Amended Project
- Compound Area

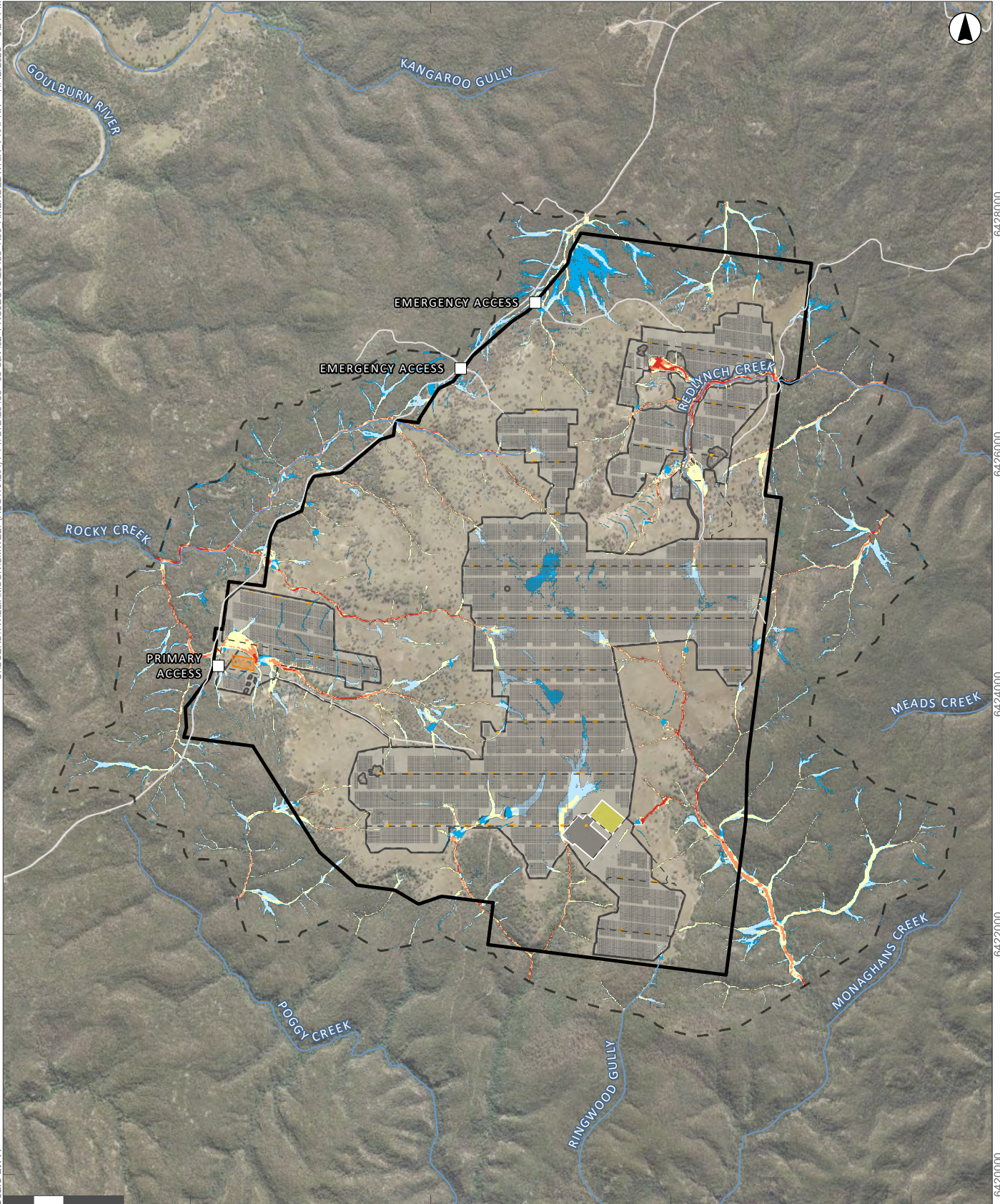
- Proposed Infrastructure**
- Battery Energy Storage System
 - Battery Substation
 - Inverters
 - Solar Panel Footprint

- Water Depth (m)**
- <math>< 0.1</math>
 - 0.1 - 0.3
 - 0.3 - 0.5
 - 0.5 - 1
 - 1 - 2
 - 2 - 3
 - 3 - 4
 - > 4.0

APPENDIX C.10
0.2% AEP Flood Depth for Existing Conditions

224000 226000 228000 230000

C:\USER\STWILLIAMSON\UMWELT (AUSTRALIA) PTY. LTD\23485 - 03 S&V02 PROJECTS\23485 - R09 AMENDED\WRIA_V4\APRX_11/12/2023_3:24 PM



1:45,000
Scale at A4

GDA 1994 MGA Zone 56

Legend

- Access Points
- Proposed Access Tracks
- Roads and Tracks
- Watercourse
- Model Extent
- Project Area
- Development Footprint - Amended Project
- Compound Area

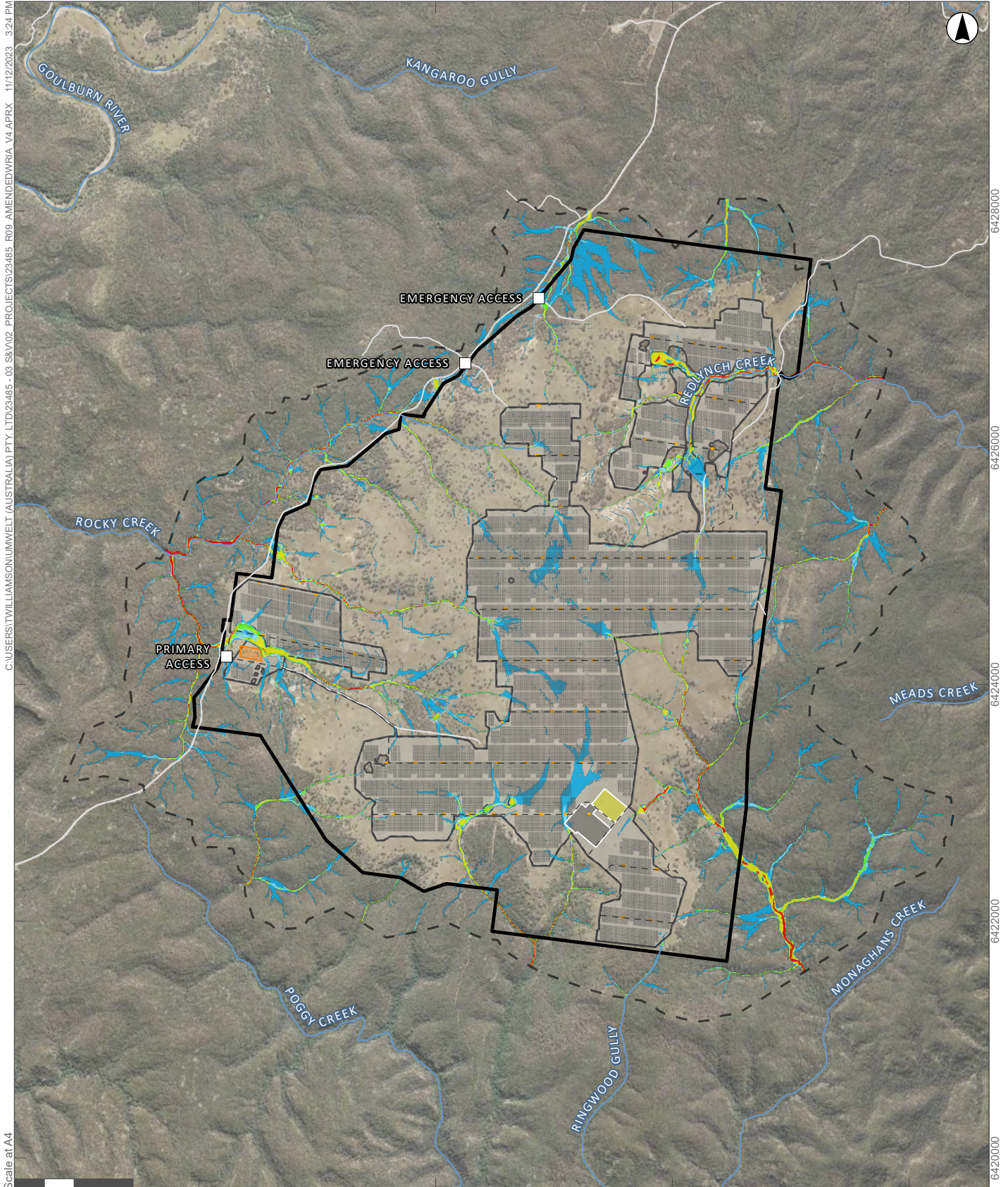
- Proposed Infrastructure**
- Battery Energy Storage System
 - Battery Substation
 - Inverters
 - Solar Panel Footprint

- Water Velocity (m/s)**
- <math>< 0.5</math>
 - 0.5 - 1
 - 1 - 2
 - 2 - 3
 - > 3.0

APPENDIX C.11

0.2% AEP Flood Velocity for Existing Conditions

224000 226000 228000 230000



C:\USER\STWILLIAMSON\UMWELT (AUSTRALIA) PTY. LTD\23485 - 03 S&V02 PROJECTS\23485 - R09 AMENDED\WRIA_V4\APRX_11/12/2023_3:24 PM

1:45,000
Scale at A4

GDA 1994 MGA Zone 56

Legend

- Access Points
- Proposed Access Tracks
- Roads and Tracks
- Watercourse
- Model Extent
- Project Area
- Development Footprint - Amended Project
- Compound Area

- Proposed Infrastructure**
- Battery Energy Storage System
 - Battery Substation
 - Inverters
 - Solar Panel Footprint

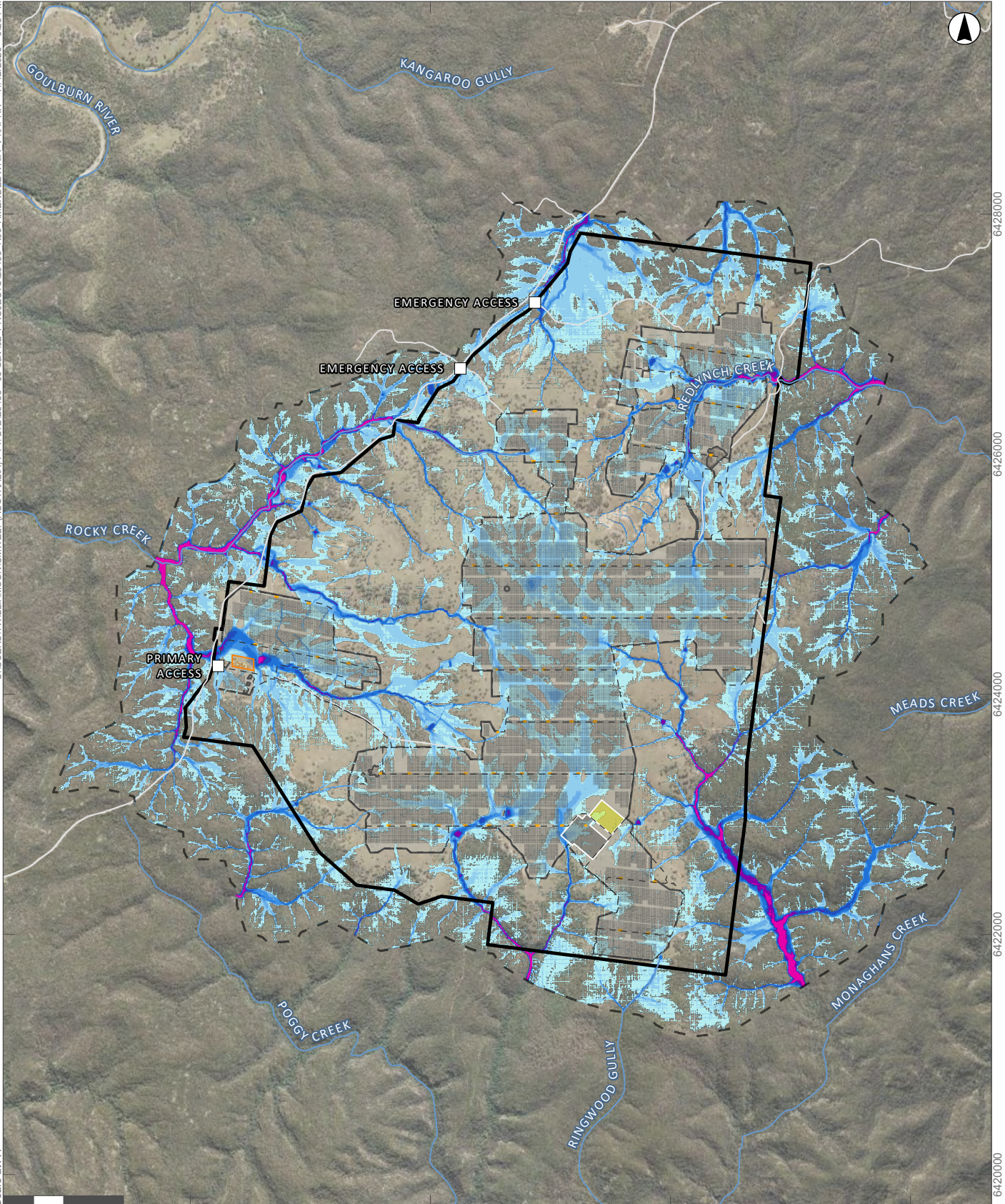
- Hazard Category**
- H1
 - H2
 - H3
 - H4
 - H5
 - H6

APPENDIX C.12

0.2% AEP Flood Hazard for Existing Conditions

224000 226000 228000 230000

C:\USER\STWILLIAMSON\UMWELT (AUSTRALIA) PTY. LTD\23485 - 03 S&V02 PROJECTS\23485 - R09 AMENDED\WRIA_V4\APRX_11/12/2023_3:25 PM



1:45,000
Scale at A4

GDA 1994 MGA Zone 56

Legend

- Access Points
- Proposed Access Tracks
- Roads and Tracks
- Watercourse
- Model Extent
- Project Area
- Development Footprint - Amended Project
- Compound Area

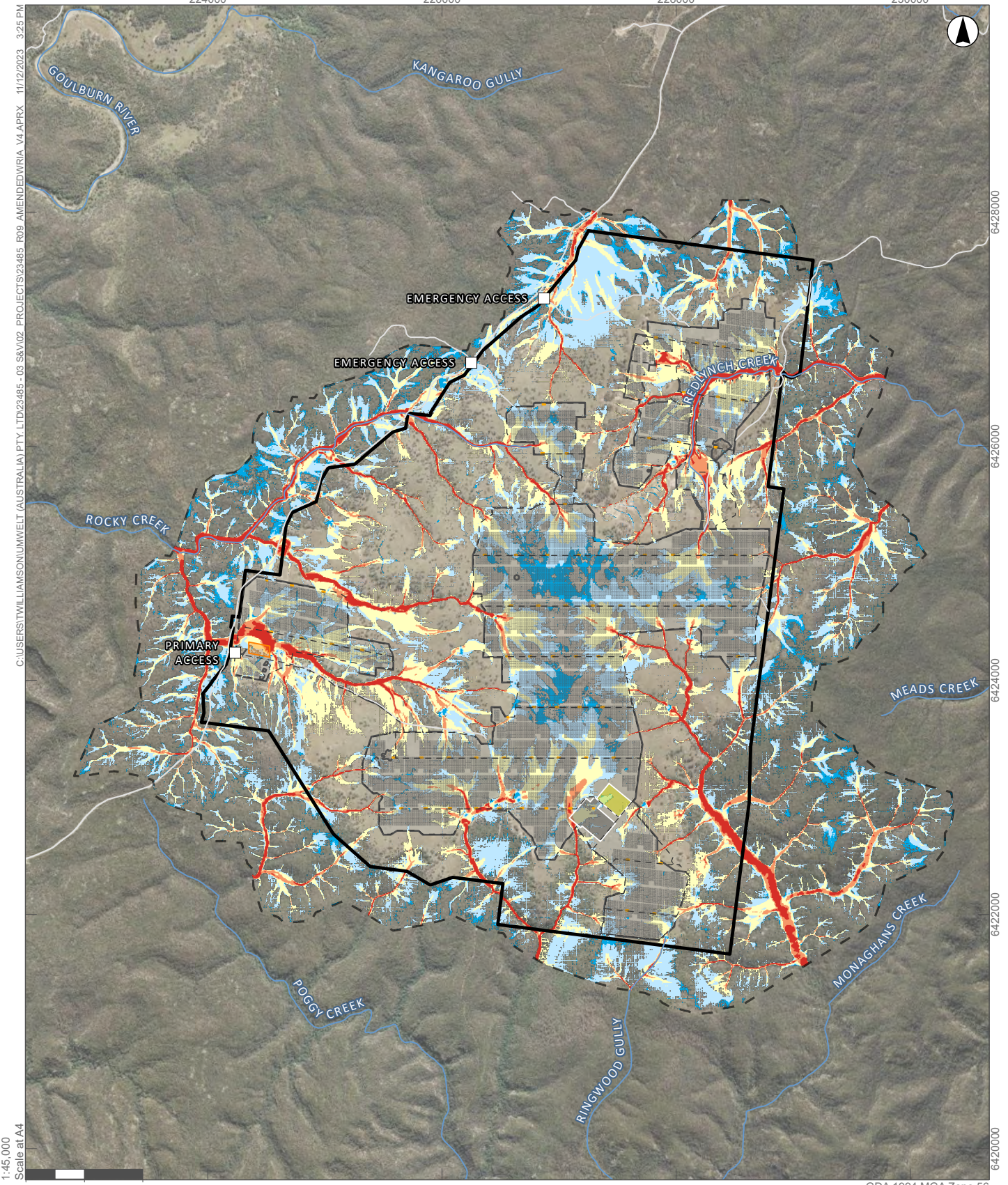
- Proposed Infrastructure**
- Battery Energy Storage System
 - Battery Substation
 - Inverters
 - Solar Panel Footprint

- Water Depth (m)**
- <math>< 0.1</math>
 - 0.1 - 0.3
 - 0.3 - 0.5
 - 0.5 - 1
 - 1 - 2
 - 2 - 3
 - 3 - 4
 - > 4.0

APPENDIX C.13

PMF Flood Depth for Existing Conditions

224000 226000 228000 230000



1:45,000
Scale at A4

0 500 1,000 Meters

GDA 1994 MGA Zone 56

Legend

- Access Points
- Proposed Access Tracks
- Roads and Tracks
- Watercourse
- Model Extent
- Project Area
- Development Footprint - Amended Project
- Compound Area

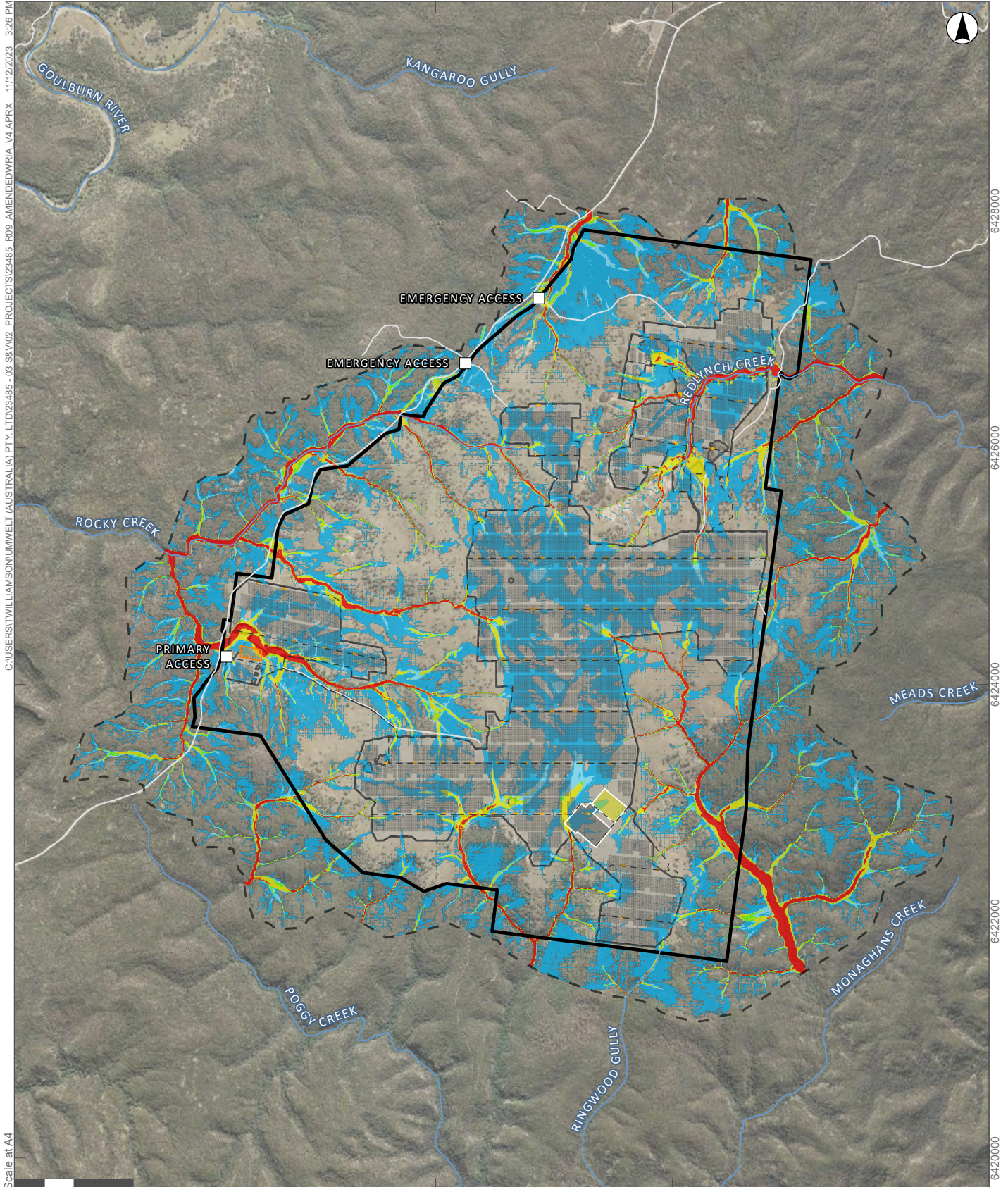
- Proposed Infrastructure**
- Battery Energy Storage System
 - Battery Substation
 - Inverters
 - Solar Panel Footprint

- Water Velocity (m/s)**
- < 0.5
 - 0.5 - 1
 - 1 - 2
 - 2 - 3
 - > 3.0

APPENDIX C.14

PMF Flood Velocity for Existing Conditions

224000 226000 228000 230000



C:\USER\STWILLIAMSON\UMWELT (AUSTRALIA) PTY. LTD\23485 - 03 S&V02 PROJECTS\23485 - R09 AMENDED\WRIA_V4\APRX_11/12/2023_3:26 PM

1:45,000
Scale at A4

GDA 1994 MGA Zone 56

Legend

- Access Points
- Proposed Access Tracks
- Roads and Tracks
- Watercourse
- Model Extent
- Project Area
- Development Footprint - Amended Project

Proposed Infrastructure

- Battery Energy Storage System
- Battery Substation
- Inverters
- Compound Area
- Solar Panel Footprint

Hazard Category

- H1
- H2
- H3
- H4
- H5
- H6

APPENDIX C.15

PMF Flood Hazard for Existing Conditions



