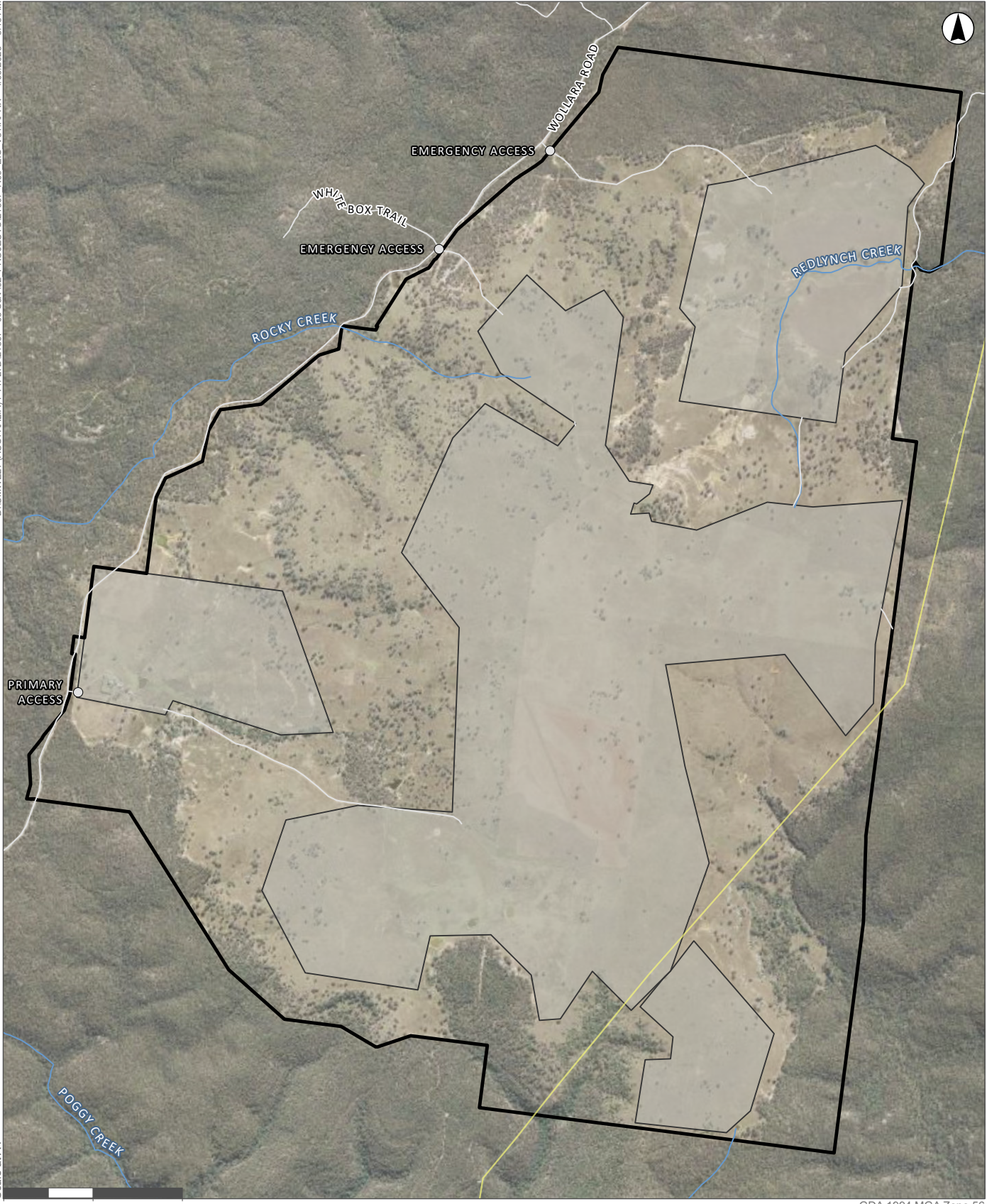


D:\UMWELT (AUSTRALIA) PTY. LTD\21507 - 03 S&V02 PROJECTS\21507_R09_EIS_V31.APRX_4/05/2023_8:13 AM

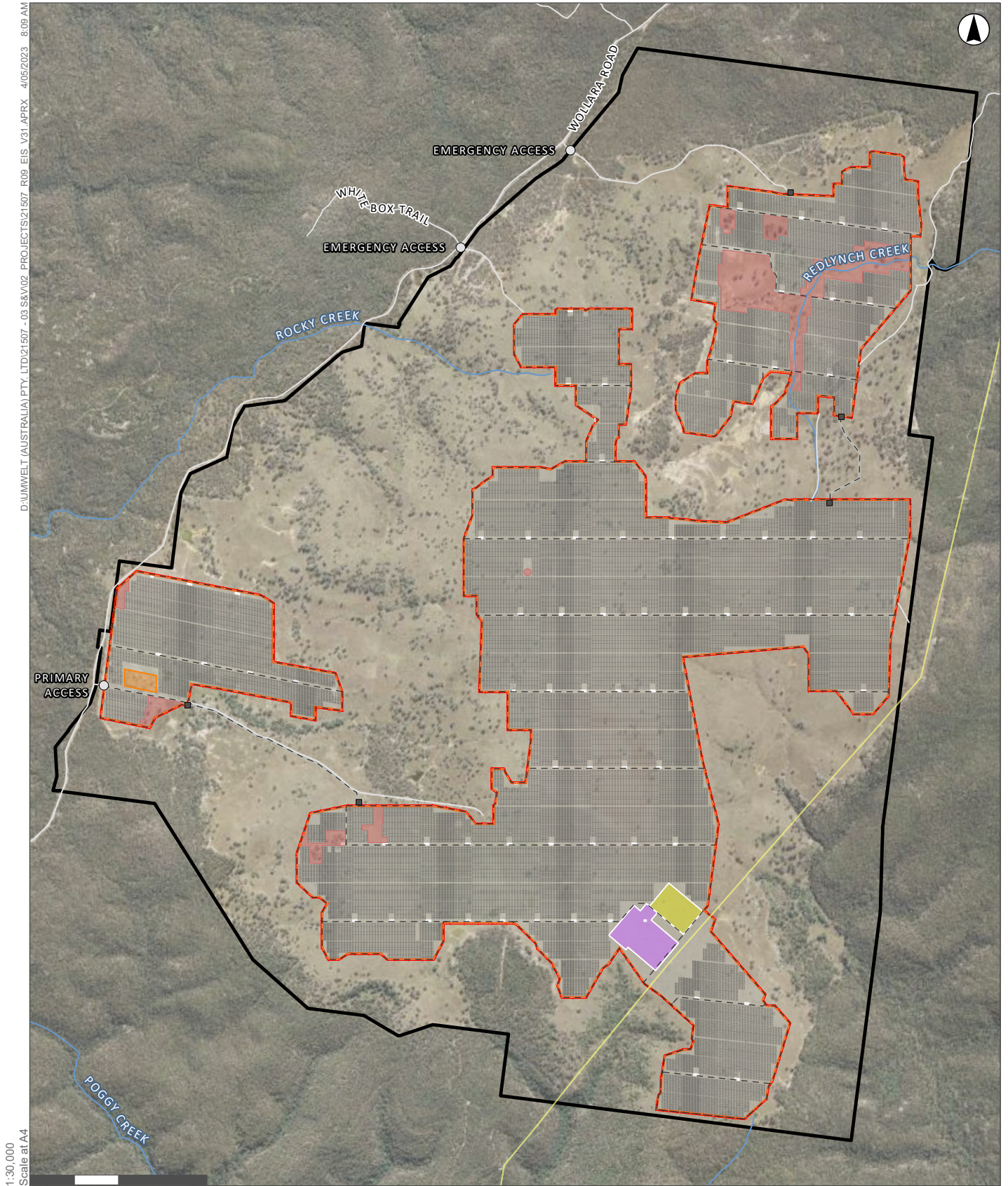
1:30,000
Scale at A4



GDA 1994 MGA Zone 56

- 0 500 1,000 Meters
- Legend**
- Access Points
 - Electricity Transmission Line
 - Watercourse
 - Roads and Tracks
 - Project Area
 - Development Footprint

APPENDIX 23 - FIGURE 1
Design Revision A (2021)



GDA 1994 MGA Zone 56

- | | |
|---------------------------------|---|
| ■ Gate | ■ Project Area |
| ○ Access Points | ■ Proposed Road Upgrades |
| — Electricity Transmission Line | ■ Fire Break |
| - - Proposed Access Tracks | ■ Battery Energy Storage System |
| — Watercourse | ■ Substation |
| — Roads and Tracks | ■ Inverters |
| — Security Fence | ■ Compound Area |
| | ■ Exclusion Zones - Environmentally Sensitive Areas |
| | ■ Development Footprint |
| | ■ Solar Panel Footprint |

APPENDIX 23 - FIGURE 3
Design Revision C (2023)