

Lower Wonga Solar Farm and battery energy storage system

COMMUNITY UPDATE
MAY 2024



This community update provides information on Lightsource bp's Lower Wonga Solar Farm and battery energy storage system (BESS) project, which is an approved project located next to Powerlink's Woolooga Substation on Wide Bay Highway and Gympie Woolooga Road, Lower Wonga.

The project originally received Development Approval in 2017 from Gympie Regional Council. Lightsource bp became the developer of the project in 2023 and, late last year, received approval for a Minor Change Application to the original planning approval. The Minor Change included updates to the project's design, including the addition of temporary construction access and minor design changes. We are currently preparing management plans and will be seeking secondary approvals as part of the next stage of the project.

Once operational, the project will have an installed capacity of approximately 350 MWdc and, as a second stage, will likely include battery storage. The project will deliver clean, reliable and affordable energy to Queensland's electricity grid. Construction on the solar farm is expected to start in 2025 with the battery works to follow at a later date.

We want to hear from you

Come and meet the team at a community drop-in session, where we will be sharing information about the project and answering any questions you might have.

Lower Wonga Hall
7 Lower Wonga Hall Road, Lower Wonga

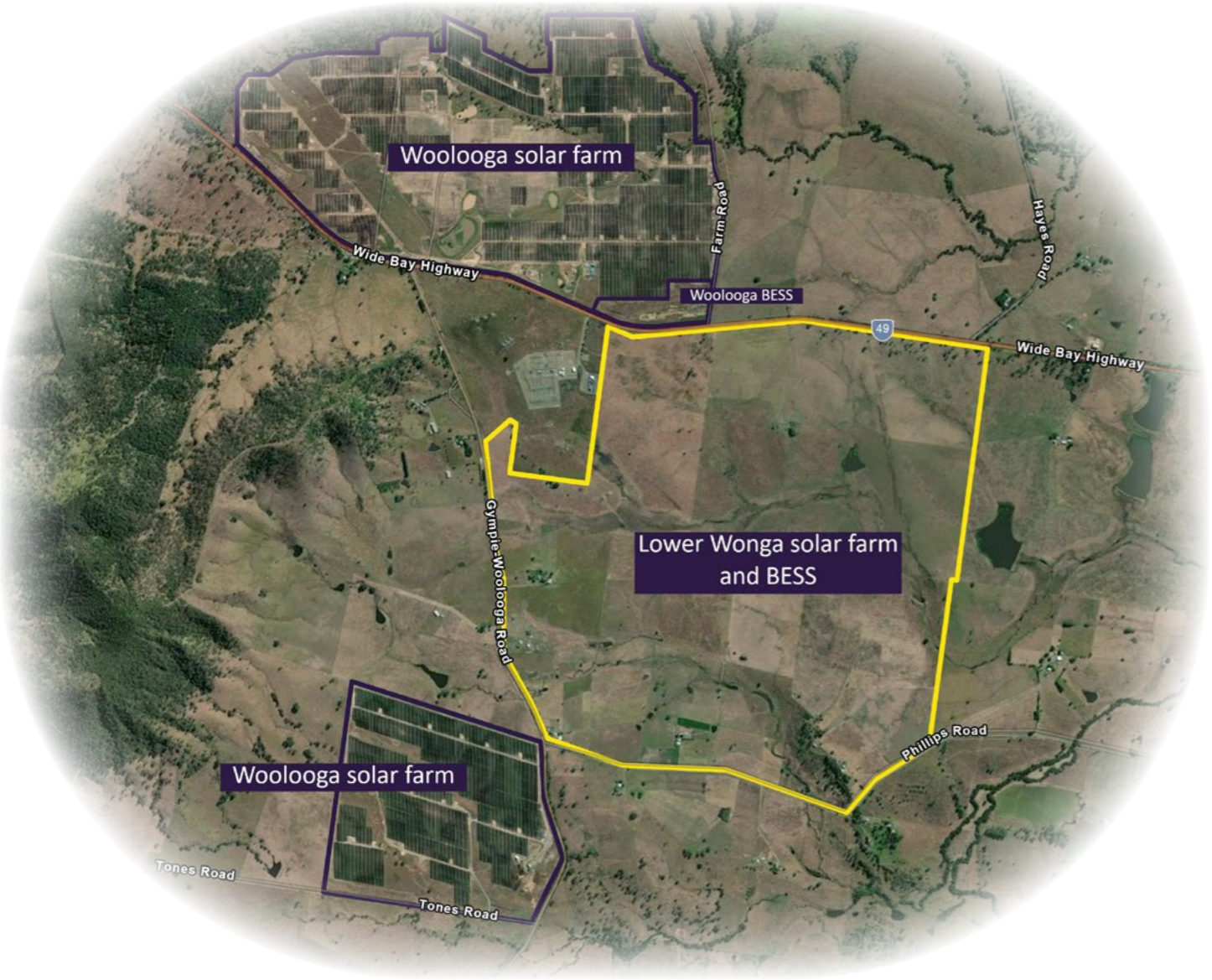
Thursday, 13 June 2024, 4pm - 7pm

Tea, coffee, and light refreshments will be available.

You can also reach out to us anytime on **1300 873 575**, or by emailing lowerwongasolar@lightsourcebp.com.

Our proposed design

SOLAR FARM AT LOWER WONGA, QUEENSLAND, AUSTRALIA



Who is Lightsource bp?

Lightsource bp is a global market leader in the funding, development and long-term management of large-scale solar projects. We work closely with local businesses to deliver sustainable renewable energy projects.

Lightsource bp developed the now operational neighbouring Woolooga solar farm.

Lightsource bp is committed to maintaining open communication as the project progresses and you can contact our team at any time if you have feedback or questions.



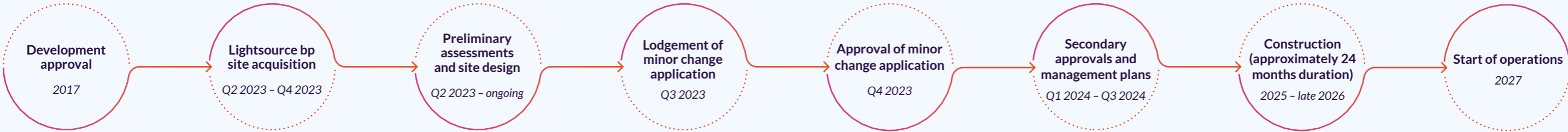
Key statistics

-  **350 MWdc** installed capacity
-  **129,000** homes powered (equivalent)
-  Approximately **577,000** photovoltaic panels
-  **572,000** metric tonnes of carbon emissions saved
-  Up to **500** jobs at peak construction
-  **352,000** fuel-burning cars taken off the roads (equivalent)



PROJECT TIMELINE

Engagement with key stakeholders and other interested parties



Lower Wonga Solar Farm Project

COMMUNITY BENEFITS

Local economic development

Lightsource bp and project investors will fund the building of clean energy infrastructure in Lower Wonga, Queensland. In addition to providing low-cost clean, renewable energy for the community, the project will create up to 500 full-time jobs during the peak construction period, with an aim to source as many jobs locally as possible depending on local conditions, workforce availability and project needs. On some of our other Australian projects we have achieved approximately 30% of employment locally. Additionally, there is expected to be at least two to four operational jobs for the full operational period.

Environmental management plan

In collaboration with environmental experts, we develop long-term environmental management plans based on detailed studies. These site-specific management plans will avoid and minimise potential impacts during construction and operation, while improving soil health, fostering biodiversity, prioritising local species, and creating wildlife habitats wherever possible.

Community engagement

Engagement with the community and key stakeholders about the Lower Wonga Solar Farm project commenced in 2017. These activities were carried out by the previous developer prior to Lightsource bp taking over the project. Lightsource bp started engagement with local site landowners in mid-2022 and secured the project land in mid-2023. Lightsource bp is committed to maintaining open, transparent and meaningful communication with the wider community as the project progresses.

Traditional Owner engagement

We are actively collaborating with the Traditional Owners of the Lower Wonga project land, the Kabi Kabi people, to jointly develop a Cultural Heritage Management Plan. This management plan will help to protect any item and site of cultural heritage significance and create job opportunities on the project for the Kabi Kabi people.

Clean, local energy

The project will provide the equivalent saving of 572,000 metric tons of greenhouse gas emissions each year, which is comparable to taking more than 352,000 fuel-burning cars off the road.

Philanthropic commitments

Lightsource bp has an existing relationship with the Clontarf Foundation in Australia and will continue this partnership as part of the Lower Wonga project by providing annual monetary contributions to the local Clontarf Academies in Murgon or Cherbourg, which will be used to improve the education and employment prospects of young Aboriginal and Torres Strait Islander men.

Lightsource bp is also establishing a relationship with LifeFlight Australia – which delivers emergency, lifesaving aeromedical care, 24/7, 365 days a year, to Queensland and Australia. Lightsource bp will be donating money from the project to LifeFlight throughout construction and operation of the project as part of a commitment championed by local landowners in the area.



Stay up to date on the Project

If you would like to receive further information on the project please contact the team using the details below

Email: lowerwongasolar@lightsourcebp.com

Phone: 1300 873 575 (freecall)

Website: www.lightsourcebp.com/au/projects/lower-wonga-solar